

Traffic Issues at Jones

Traffic in front of Jones Elementary School is not always easy, but if we all work together then we can fix any issues and make the street and school safer for everyone.

Students, Parents, and Staff need to share the responsibility in understanding and obeying all traffic laws in and around the school zones. We hope that this brochure will help to inform you about traffic safety at Jones Elementary School.

Common Problems

The most common problems that we see every day is adults parking where they should not be parking - in the bus zone, in the loading zone, double parking, in the staff parking lot, and in our neighbor's driveways. We also see students and parents jaywalking (crossing illegally, not in crosswalks).

CONTACT US

JONES ELEMENTARY
2751 Greyling Drive
San Diego, Ca. 92123
(619) 605-8800

Website:
<https://jones.sandiegounified.org/>

Safety Tips!

In an effort to keep everyone safe, here are some tips to help improve the traffic flow:

- ⇒ Only use the loading zone to quickly load or unload your student(s). It is not for parking or for waiting in the car, or a place to use your phone for calls or texting.
- ⇒ Wait patiently for others to clear the loading zone. DO NOT Double Park to unload, it blocks visibility for other children and vehicles.
- ⇒ Carpool if possible! It helps reduce the number of vehicles in front of the school.
- ⇒ If you are walking your child to the gate, we suggest parking on Gowdy Ave. or Polland Ave.
- ⇒ The bus zone is for BUSES only. No parking, loading, or unloading is allowed.
- ⇒ The parking lot is for STAFF only. Those with a disabled placard are welcome to park in designed disabled spots.
- ⇒ U-turning in front of school is unsafe and illegal.
- ⇒ Honking, yelling, or cursing at other drivers and children is never appropriate.

Test Yourself!

1. Is this legal?



Yes! Its fine!

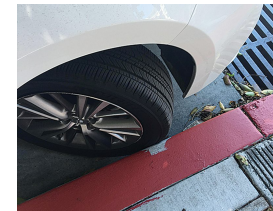
☐

NO way!

That's not okay!

☐

2. Is this legal?



Yes! Its fine!

☐

NO way!

That's not okay!

☐

3. Is this legal?



Yes! Its fine!

☐

NO way!

That's not okay!

☐

What Do Those Signs Mean?



This sign means you are in A **Loading Zone** area only. You may not park your vehicle in a *Loading Zone* between the hours of 7 a.m. to 4 p.m. It is for quickly loading or unloading passengers. You are not allowed to leave your vehicle at any time between those hours.



This sign means it is a **School Bus Zone** only. It is designated for School Buses only. There is no parking allowed between the hours of 7 a.m. and 4 p.m. It is not a loading area for loading students.



This sign is for the Staff Parking Lot area. It is designated for **School Staff** only and persons with a disabled placard. There is to be NO student drop-off, pick-up, or parking in Staff Parking lot at any time.

Traffic Safety Quiz Answers:

1. No, that it not legal or safe! California Vehicle Code 22103. No person in a residential district shall make a U-turn when any other vehicle is approaching from either direction within 200 feet, except at an intersection when the approaching vehicle is controlled by an official traffic control device.
2. No, that is not legal or safe! California Vehicle Code 21458(a) describes rules for curb markings. RED curb indicates NO STOPPING, STANDING OR LEAVE VEHICAL UNATTENDED (No student Drop-off or Pick-up in the Red Zones).
3. No, that is not legal or safe! California Vehicle Code section 22500(H) Double Parking is prohibited. No Stopping, Parking, or Standing of any attended or unattended vehicle on the roadway side of any vehicle stopped, parked, or standing at the curb or edge of a road or highway.

For more information please visit California Legislative page at: leginfo.lefistature.ca.gov

School Police Officers & Safety Patrol

SDUSD School Police and the San Diego Police Department work together to patrol our school day and night. We also have a dedicated student Safety Patrol working hard to keep everyone safe. Please be respectful of their service to our community.

JONES ELEMENTARY SCHOOL Traffic Safety

SAFETY IS EVERYONE'S RESPONSIBILITY

